

The Dispatcher February 2022

Presidents Message

By Eric Dilbeck

I am excited for our museum this year. We have volunteers working on many projects and lots of exciting developments. With 2021 being a success financially for the Oklahoma Railway Museum, we are able to move forward on some of our goals. One of which was to hire an additional employee.

In our December Board of Trustee meeting, a motion was approved to hire a Development Manager. Our Succession planning committee worked hard on developing this position last year. Bob Cook, Anne Chilton, Tom Harrington, Charles Price, and I created a position description, and it was approved at the October trustee meeting. In early December we posted the job opening and received about a dozen resumes. The hiring committee of Anne Chilton, Greg Hall, and I looked thru the applicants and interviewed four. Of those, two rose to the top, and we decided that our new Development Manager would be Jeremy Wance. Jeremy brings to the position museum fundraising experience from his time at the American Organ Institute in Norman. If you see him around the museum, please say hi and introduce yourself.

Another goal the trustees set was for groundbreaking of our New Events Center for Jan of 2023. Greg Hall and I have been working with ARC Architecture over the last few months. Several projects will need to be completed this year for this goal to be feasible. Realignment of Main Track 2 and north switch is required for the platform to line up with the new events center. Volunteers have started on this project by taking up the bricks north of Oakwood depot. Another project will be creating an executing an electrical distribution plan. Currently electric wires cross over where the events center will be built. Relocating the main distribution point of our electric service is in planning stage. Lastly, we will look at a drainage plan that will address requirements for our expansion.

In the next couple of months, we will be finalizing the layout and design of the events center. I hope to have rendering to show the membership at our annual members meeting on March 26th. Our meeting is scheduled for 3:00pm in the Jim Murry Maintenance Facility. We will host the meeting on Zoom for members that cannot attend. With all these projects at the museum, we need your help. We get a good number of volunteers every Saturday but could always use more and during the week as well. I look forward to seeing you at the museum.

See You On The Rails!

Upcoming Events

GCOR Testing: March 12th, 2022, at 9:00am

Annual Members Meeting: March 26th, 2022, 3:00pm
At the museum in the shop building

Spring Steam Train and ATT: April 1st-3rd and April 8th-10th

Easter Train: April 16th, 2022

Reading the Rails Book Club Meeting: April 23rd, 2022 at 10:00am Join the club [here!](#)



Attention ORM Members and Volunteers

The museum expansion is underway!! We will be doing some work in the museum parking lot while moving the track.

If you volunteer on Saturdays, please leave all parking spaces for visitors and park on the west side of the barn.

Thank you and sorry for the inconvenience!

Trustee Meeting, January 25, 2021

- Reviewed the Financials for the month and the Polar Express report.
 - Nominations were being received for the Board Elections at the Annual meeting set for March 26th. Cut off date for nominations is February 21st.
 - The lowest best bid had been accepted for the Fence Project. Projected cost to be \$113,654. Work will begin when weather warms.
 - Project planning meeting had been held and project list will be posted in the log in area at the Murray Shop.
 - Goal set for new event center groundbreaking in 2023.
 - Motion approved to begin demolition of platform from North side of Oakwood Depot to the current parking lot for track realignment and utility issues in preparation for the event center.
 - The Porter Engine at the museum will have a boiler test in April to determine if it can be used in restoration to operation at some future date.
 - Museum received notification that it had been approved for State Sales tax exemption on purchase items.
 - Museum will host the MKT Historical Society with a train ride during their meeting in OKC March 31 to April 3rd
 - Museum has contacted the City Parks and Golf Course for work on the drainage at NE 36th. They have responded and should be meeting in the future.
 - Museum received an Amtrak Baggage Car that had been previously requested.
-

Museum Update

By Drake Rice

Winter has come to Oklahoma and has slowed down things at the museum but work in the Jim Murray Maintenance Facility is still going strong starting with the RS-3 locomotive. This project has been years in the making. The engine was repainted during the Oklahoma Centennial Celebration in 2007, but its leaky radiators curtailed its use. On the first of January, President Dilbeck made a run to Illinois to pick up a set of radiators for the RS-3. These were salvaged from a scrapped RS-3 and are in excellent condition. The mechanical crew has started prep work for installation of the new radiators. The RS3 is also getting a new coat of paint. Volunteer Bob Nantois and other are working on removing the old, faded paint in preparation for its new Rock Island design. One of our members generously provided the money for this project.

On track one in the shop, the ATSF 2571 (CF7) is getting new head gaskets and seals installed. After the radiators were repaired last year, water leaks on the heads prevented us from running the engine. We had planned to use it with the MKT 48 on the Polar Express Trains, this is why we leased a unit from Farmrail. Once these repairs are complete, we should have this engine back in operation for our summer trains.

Also on track one, is a Frisco wooden caboos. It was cosmetically restored by the Boy Scouts a few years ago. A few finishing touches of ORM logo sign and stenciling need to be completed, and then it will be moved to the museum entrance to be our welcome sign. Last year, volunteers placed ballast and rail on the southside of the museum entrance which will support the caboos. We will need to use a crane to move it into position. The project is waiting on a set of trucks to arrive to complete this project.

Good news on the Le Flore Depot project. Volunteer, John Cobb, has helped secure an electrical permit to power the building. This will allow volunteers to use power tools in the depot and speed up its restoration. Volunteers, Charles Price and Bob Cossairt are working on the interior of the depot. Charles removed the interior paneling and is scraping off old paint. Plans are being made for the large deck that will be installed on the west and south sides of the depot. When completed the depot will house the museum offices and ticket sales. Another generous member donation has allowed this project to move forward.

The city parks department and the Lincoln Park Golf Course started looking into the drainage issue at the 36th Street crossing. We appreciate the work they are doing on this issue. The museum will need to work on the crossing this year along with some other planned track work. Currently there are two street panels on the north side of the street, but several more will need to be purchased.

Now is the time to start volunteering at the museum. We have many interesting projects going on and our regular season is starting on April 1st. Please contact Amanda Resnick at the museum to volunteer, 405-424-8222 or email amanda@oklahomarailwaymuseum.org. Also remember Spring is right around the corner and we will need grounds volunteers to help with mowing and other landscaping. We look forward to seeing you at the museum!

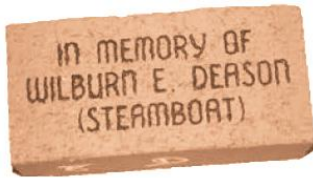
The museum needs the following items:



Heavy Duty shelving is needed for museum storage area (3 units)
Outdoor Easter decorations for Easter Egg Hunt

Contact Anne Chilton 405-424-8222 annem@oklahomarailwaymuseum.org if you would like to purchase anything on this list. To donate funds click link [DONATE](#) and mention what funds are for in the note section of donation form. You can also mail us a donation if you prefer.

Donation Box



Because of closings and cancellations, we are in need of donations more than ever before! Brick purchases and donations will make a real difference during this difficult time.

Please visit our website if you can give! [DONATE](#)

Membership Renewal

Once again it is time to renew your membership with the Oklahoma Railway Museum!

We want to thank all of you for your hard work and support these last two years. It is because of you, our members and volunteers that we are still here and have a great outlook for the coming year.

Your membership renewal and support are vital to continue our mission to provide an educational experience of railroads and how they shaped Oklahoma and the nation.

Thank you for your continued support, and we look forward to the New Year!

You may mail in your dues or **to pay online** [Click Here](#)

With your membership you receive:

- Two free train rides on regular run days (Does not apply to Special Events)
- Emailed copy of the ORM newsletter, The Dispatcher
- Member's picnic and train ride
- Opportunities for other rail trip activities
- Eligibility to become a train crew member or car host
- Discount in museum gift shop

Membership dues are outlined below:

Regular Membership	
(Includes Spouse).....	\$40.00
Senior (Age 65+) Membership (Includes Spouse).....	\$35.00
Student (Full-time)?Membership?.....	\$35.00
Family Membership (Two Adults and Four Children).	\$50.00
Sustaining Membership (including Spouse).	\$150.00

Please update any contact information that may have changed.

Membership cards will be mailed out in January

We look forward to seeing you in the coming year, so we can show you what we've been working on. Please visit us soon!



PLANNED GIVING

Charitable Bequest

A charitable bequest is one of the easiest and most flexible ways that you can leave a gift to Oklahoma Railway Museum that will make a lasting impact.

Benefits of a bequest

- Receive an estate tax charitable deduction
- Reduce the burden of taxes on your family
- Leave a lasting legacy to charity

How a bequest works

A bequest is one of the easiest gifts to make. With the help of an attorney, you can include language in your will or trust specifying a gift to be made to family, friends or Oklahoma Railway Museum as part of your estate plan, or you can make a bequest using a beneficiary designation form.

Here are some of the ways to leave a bequest to Oklahoma Railway Museum

- Include a bequest to Oklahoma Railway Museum in your will or revocable trust
- Designate Oklahoma Railway Museum as a full, partial or contingent beneficiary of your retirement account (IRA, 401(k), 403(b) or pension)
- Name Oklahoma Railway Museum as a beneficiary of your life insurance policy

A bequest may be made in several ways

- Percentage bequest - make a gift of a percentage of your estate
- Specific bequest - make a gift of a specific dollar amount or a specific asset
- Residual bequest - make a gift from the balance or residue of your estate

Contact us

If you have any questions about leaving a bequest to us, please contact [us](#). We would be happy to assist you. If you have been so generous as to include a bequest to Oklahoma Railway Museum as part of your estate plan, please take the time to let us know. We would like to recognize you and your family for your generosity.

The Brotherhood of Sleeping Car Porters

By Amanda Resnick

The Pullman Company was established in 1862. Their cars had comfortable beds, plush furnishings, and unparalleled customer service. The cars were not owned by the railroads, but were separately run “hotels on wheels.” Shortly after the Civil War, founder George Pullman, sought to hire formerly enslaved people to work as porters on his cars.

Porters carried luggage, shined passengers’ shoes, set up berths, served food and drinks, and cleaned the cars. Until the 1960s, these porters were almost exclusively Black. The Pullman Company became one of the largest employers of African Americans in the United States.



The Pullman Company cultivated an image of a benevolent and progressive employer, but the truth of working for the company was quite different. Porters were paid very little even by the standards of the time, about \$0.27 an hour. (\$5.66 in 2022 money) They were dependent on tips to survive. They worked an average of 400 hours or 11,000 miles a month.

Pullman porters were expected to pay for their own meals, lodging, uniforms, and shoe-shining supplies. The hours they spent prepping the cars before the passengers arrived were unpaid, and they were charged for anything passengers stole, such as towels or china. They were allotted only four hours of sleep a day. They were ineligible for promotion to conductor due to race. They also suffered abuse and racism from the passengers themselves. It was common to call all the porters “George” after George Pullman, a throwback to when slaves were named after their owners in the south

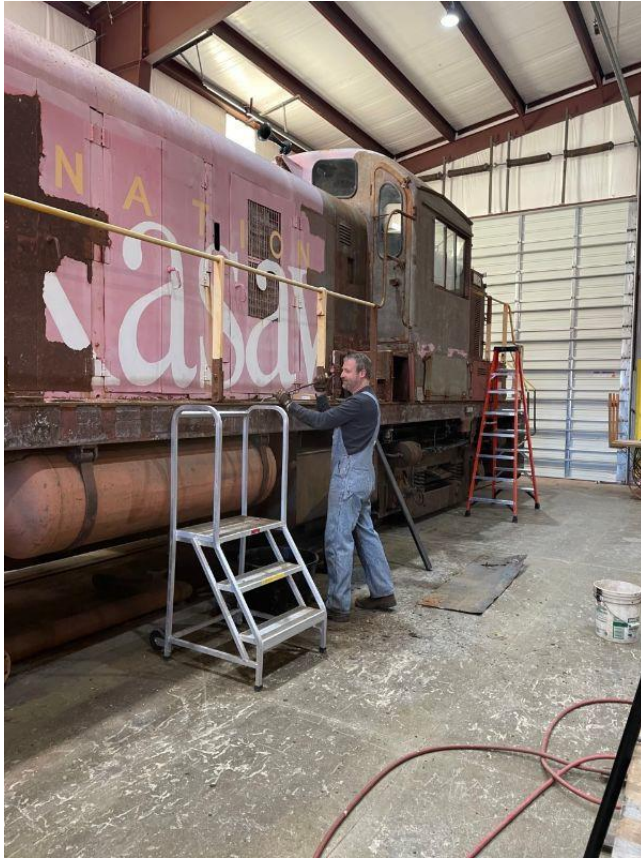
As early as 1900, groups of Pullman Porters began trying to organize a union for better pay and working conditions, but The Pullman company crushed their efforts. In August 1925, the Brotherhood of Sleeping Car Porters was launched, led by A. Philip Randolph, a labor unionist and civil rights activist.

For the first several years of its existence, the union grew its membership to over half of all Pullman Porters. It sought to have the Interstate Commerce Commission investigate the Pullman rates, porters' wages, tipping practices, and other matters related to wages and working conditions, but the ICC denied their request. After ten years of fighting the BSCP was finally recognized by the American Federation of Labor, making them the first All-Black union in the United States. In 1937, they were able to negotiate higher wages, a 240-hour work month, and overtime. A huge win in the Early Civil Rights Movement.

Train travel began to decline after World War Two, and BSCP membership fell from 18,000 to 3,000 in the 1960s. The BSCP merged with the Brotherhood of Railway and Airline Clerks in 1978.

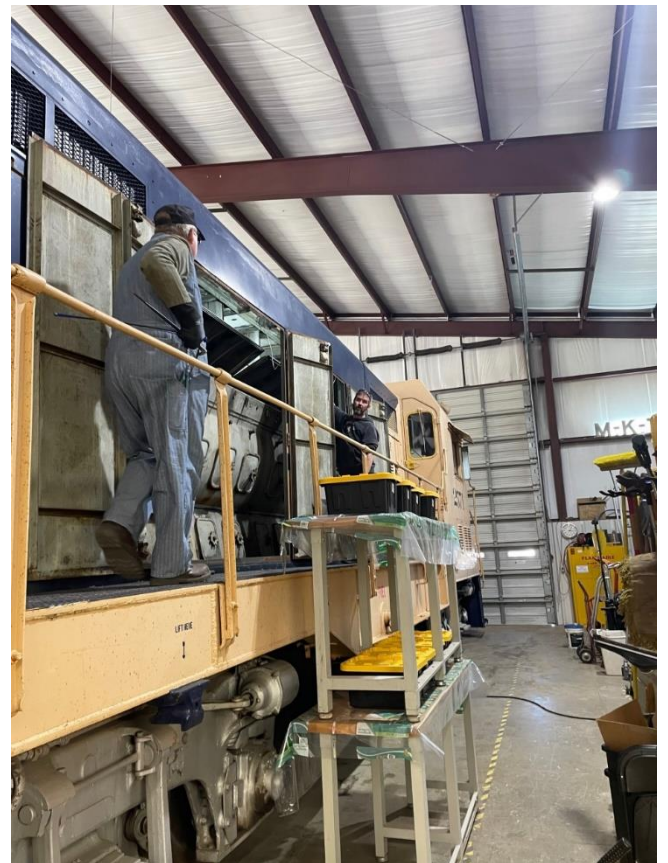
The history of the BSCP is often overlooked but is an important part of the Labor and Civil Rights Movements. Their first President A. Philip Randolph is considered one of the fathers of the civil rights movement. He influenced many activists and pioneered methods of non-violent confrontation.

Around the Museum



Eric Dilbeck works on our RS3 Locomotive. The walkway deck sheets are being removed due to rust and water damage. You can see one section on the floor.

Volunteers Guy Lynn and John Nave work on the CF7 engine. New head gaskets and seals are being installed due to water leaks.





Volunteer Charles Prices paints boards for the interior of Le Flore Depot

Members gathered in the shop building for our annual planning meeting



Copyright © 2022 Oklahoma Railway Museum, All rights reserved.

Hi, just a reminder that you're receiving this email because you have expressed an interest in Oklahoma Railway Museum. Don't forget to add info@oklahomarailwaymuseum.org to your address book so we'll be sure to land in your inbox!

Our mailing address is:
Oklahoma Railway Museum
3400 NE Grand Blvd
Oklahoma City, OK 73111



Oklahoma Railway Museum, Ltd.
3400 NE Grand Boulevard
Oklahoma City, OK 73111-4417

Return Service Requested

The Dispatcher

Timetable

Oklahoma Railway Museum (ORM) - Open Thursday, Friday, and Saturday from 9:00 AM until 5:00 PM
Closed on major holidays.

ORM Train Rides - First and third Saturdays, April through August at 9:15 AM, 11:15 AM, 1:15 PM and 3:15 PM

ORM Board Meetings - Last Thursday of every month at Oklahoma Railway Museum - 7:00 PM

Oklahoma "N" Rail - For information call Rick Inselman (405) 412-1552

Oklahoma Model Railroad Association - For information contact Phil Howell via email omratrains@gmail.com

Central Oklahoma Garden Railroad Society Contact information:

Steve Lemcke (405) 703-0209 e-mail steve.lemcke@att.net

Marshall Douglas (405) 290-8989

Steve Kamm (405) 685-3755 email skamm@college.occ.edu

Passenger Rail Oklahoma - Passenger Rail Oklahoma volunteers provide Amtrak depot hosting for the Hartland Flyer in City of Norman, OK most evenings, holidays, Saturdays, and Sundays.
The depot opens at 7:50 AM. Contact Evan Stair at sfrr@aol.com, www.passengerrailok.org, or (405) 366-8957. Depot volunteer opportunities are available.

Oklahoma S.W. Division NMRA - 2nd Saturday of each month, 1:00 PM, Goldman Room, Kirkpatrick Center,
Jim Heidon, President

Yukon's Best Railroad Museum - Thursday/Saturday/Sunday and by appointment. Located 1 block north of Main and UP tracks
in Yukon. Call John Knuppel, (405) 354-5079, for times and information.

Waynoka Station/Waynoka Historical Society - 202 South Cleveland, Waynoka, (580) 824-1886. If you can help,
call Sandie Olson.

Corrections

Any changes to the above information or articles in "the Dispatcher" should be directed to the editor, at info@oklahomarailwaymuseum.org. For information on upcoming programs contact Anne Chilton at annem@oklahomarailwaymuseum.org.